

MOTORDYNE

ATTENTION!

MOTORDYNE MAXIMA CATBACK

EXHAUST 7TH & 8TH GENERATION

**DO NOT FLOW EXHAUST GAS THROUGH THE
MOTORDYNE EXHAUST SYSTEM UNTIL THE CORRECT FITMENT IS
VERIFIED!**

**If you experience any difficulties with MD SYSTEM please call
Motordyne Tech. Support for assistance call 661-993-5111 or
email info@motordyneengineering.com**

**NO REFUNDS, EXCHANGE, RETURNS OR REPLACEMENTS ON USED
PRODUCTS FOR WRONG PROUDCTS INSTALLED AND OR
INSTALLED INCORRECTLY.**

IMPORTANT!

Please pre-assemble this kit to verify it contains all the correct parts before scheduling or starting installation.

Motordyne is not responsible for removal, installation or other 3rd party cost.

MOTORDYNE ENGINEERING

MAXIMA EXHAUST 7th & 8th Generations

MANUAL

Item# MD-023

QTY: 2 each BOLTS
QTY: 2 each NUTS
QTY: 2 each 2-1/2 2HOLE GASKETS
QTY: 1 each INSTRUCTION SHEET / WARRANTY SHEET
QTY: 1 each DECAL (if available)

REMOVAL OF STOCK SYSTEM

1. Remove the rear muffler by separating 2 bolt flange from mid pipe. Lubricate hangers ease of removal



2. Remove mid pipe from catalytic converter section. **RETAIN ALL FACTORY HARDWARE IN THIS AREA** - it will be reused.



INSTALL OF MOTORDYNE CATBACK EXHAUST

1. Install front pipe to catalytic converter assembly. Inspect OEM gasket before use. Ensuring proper tension and fit of flange connection and tighten.

2. Install Y pipe into place with 2.5" V-band clamp. Secure clamp enough to hold pipe in place while allowing for rotation and adjustability.



3. Install rear pipe sections with re-lubricated rubber hangers. Install all 4 hangers hooks so pipes are loosely affixed. Use V-band clamp to attach the pipe section to axle pipe. 4087

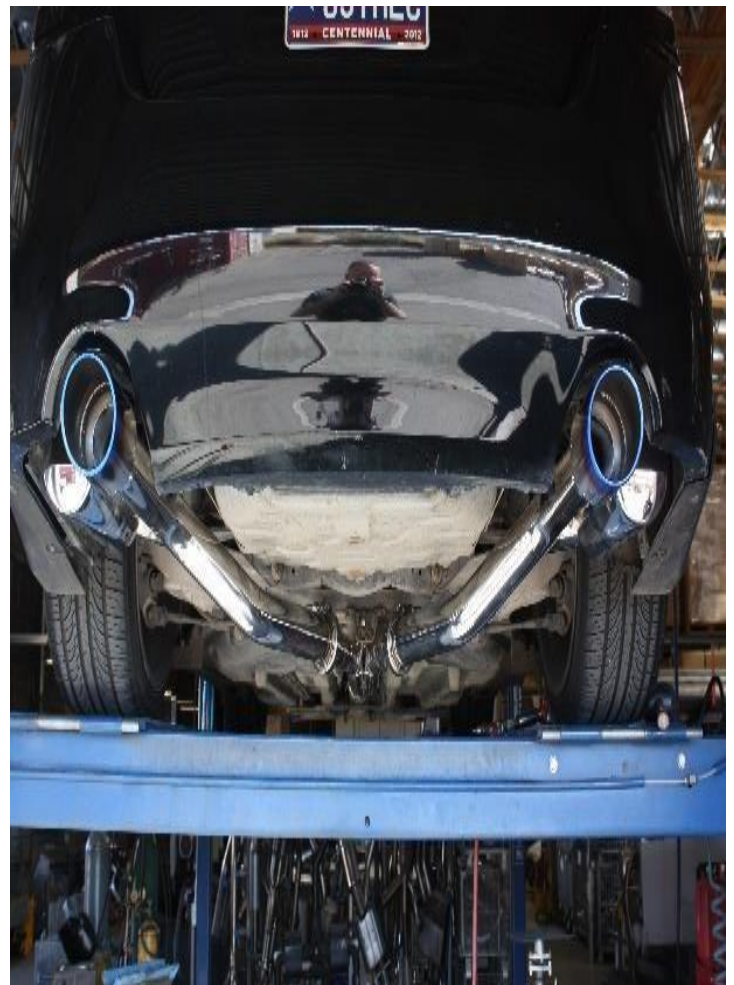


4. Install tips into place.



5. Adjust all components into position with tips centered in the bumper outlets.

6. Starting from the front of the car, tighten all clamps while maintaining proper fitment.



MOTORDYNE WARRANTY TERMS AND CONDITIONS

Many parts are for off-road use only.

As with any racing activity, there are risks at performance modifications. All in stallions are at the customers own risk. Motordyne Engineering holds no responsibility either implied or otherwise for mechanical, electrical or other failure when using after market performance products. Some items listed are illegal in many states and only for racing vehicles which may never be used on a public highway.

Warranty Policy of MOTORDYNE Inc. warrants to the original retail purchaser that the MOTORDYNE product will be free from defects in material and workmanship for one year from the date of original purchase except for : Full stainless steel exhaust and piping, which are warranted for two years from original purchase. This warranty does not apply where the product is purchased from an unauthorized Motordyne dealer.

The product has been abused, salted misused, damaged or improperly maintained, repairs have been made or attempted by others, because of normal tarnish, wear or tear, alterations have been attempted or made to the product, the product is a consumable, the product has been in an accident.

This non-transferable warranty is limited to repair or replacement, without charge, of the product/part found to be defective or, at MOTORDYNE'S option, refund of the purchase price and does not extend to claims for other loss or damage arising from the defect. Warranty is applicable only with a receipt from authorized Motordyne dealers. If a part does not fit or work properly, is blemished or is the wrong part, do not start the engine and uninstall the part immediately. Parts must be returned for inspection and approval before replacements can be sent. If a part or component from Motordyne system/kit is found to be defective, this warranty shall apply only to the defective part or component and shall not require MOTORDYNE to repair, replace or refund the complete MOTORDYNE system/lit. In no event shall MOTORDYNE liability under this warranty exceed the purchase price of the MOTORDYNE product.

This warranty does not include the cost of removal, shipping or re-installing of the product. No person or representative is authorized to extend any warranty on behalf of MOTORDYNE product.

MOTORDYNE DISCLAIMS ANY AND ALL LIABILITY FOR ANY IMPLIED WARRANTY, INCLUDING THE IMPLIED WARRANTIES OF MERCHANTABILITY AND FITNESS FOR A SPECIFIC PURPOSE. UNDER NO CIRCUMSTANCES SHALL MOTORDYNE BE LIABLE FOR ANY INCIDENTAL, INDIRECT, SPECIFIC OR CONSEQUENTIAL DAMAGES ARISING FROM PURCHASERS USE OF THE PRODUCT. SOME STATES DO NOT ALLOW ONE OR MORE OF THE ABOVE SPECIFIED EXCLUSIONS OR LIMITATIONS. THIS WARRANTY GIVES YOU SPECIFIC LEGAL RIGHTS AND YOU MAY ALSO HAVE OTHER RIGHTS, WHICH VARY FROM STATE TO STATE.

Motordyne is not responsible for loss or damage caused during shipment. This is the responsibility of the carrier. All orders are shipped fully insured to protect against theft, loss rifling and damage. Damage parts must be reported to shipping carrier immediately.

- All returns must be approved by MOTORDYNE with an RMA#
- All returns must be in the original box.
- No returns on used or damaged products.
- All non-defective returns are subject to a 20% restocking fee.